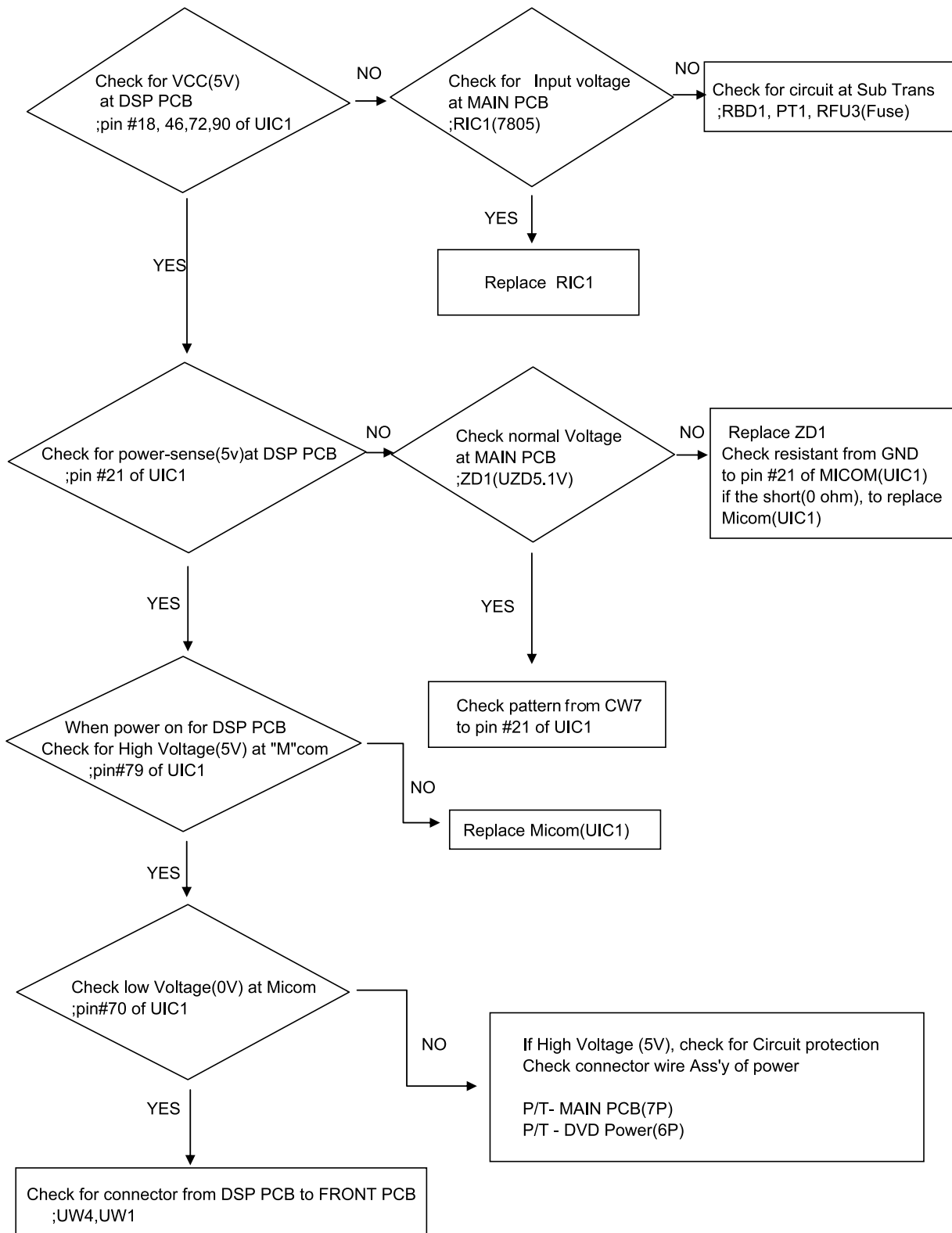


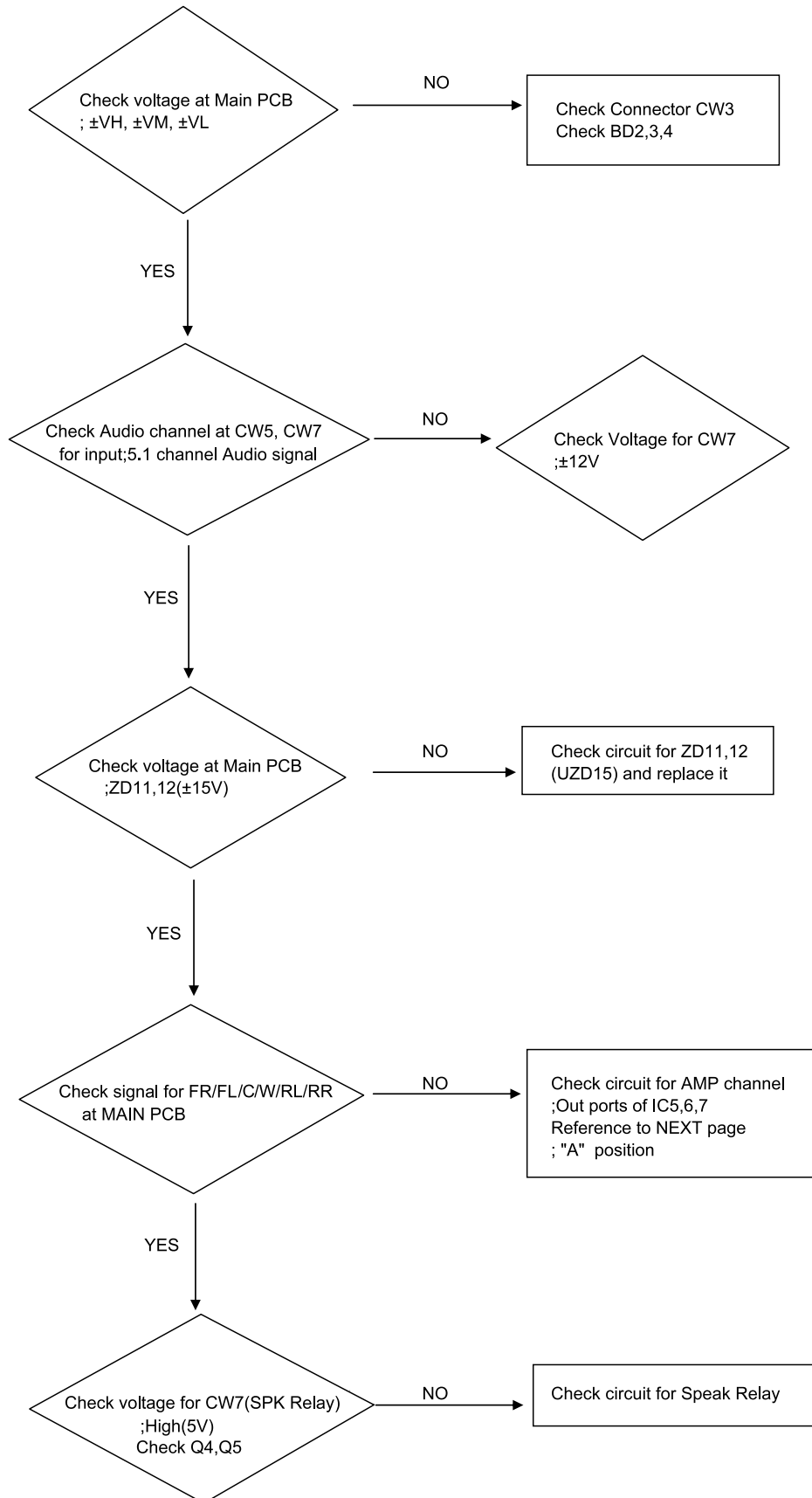
## 9. TroubleShooting

### 9-1-1 Main; HT-DM150

#### 1. POWER

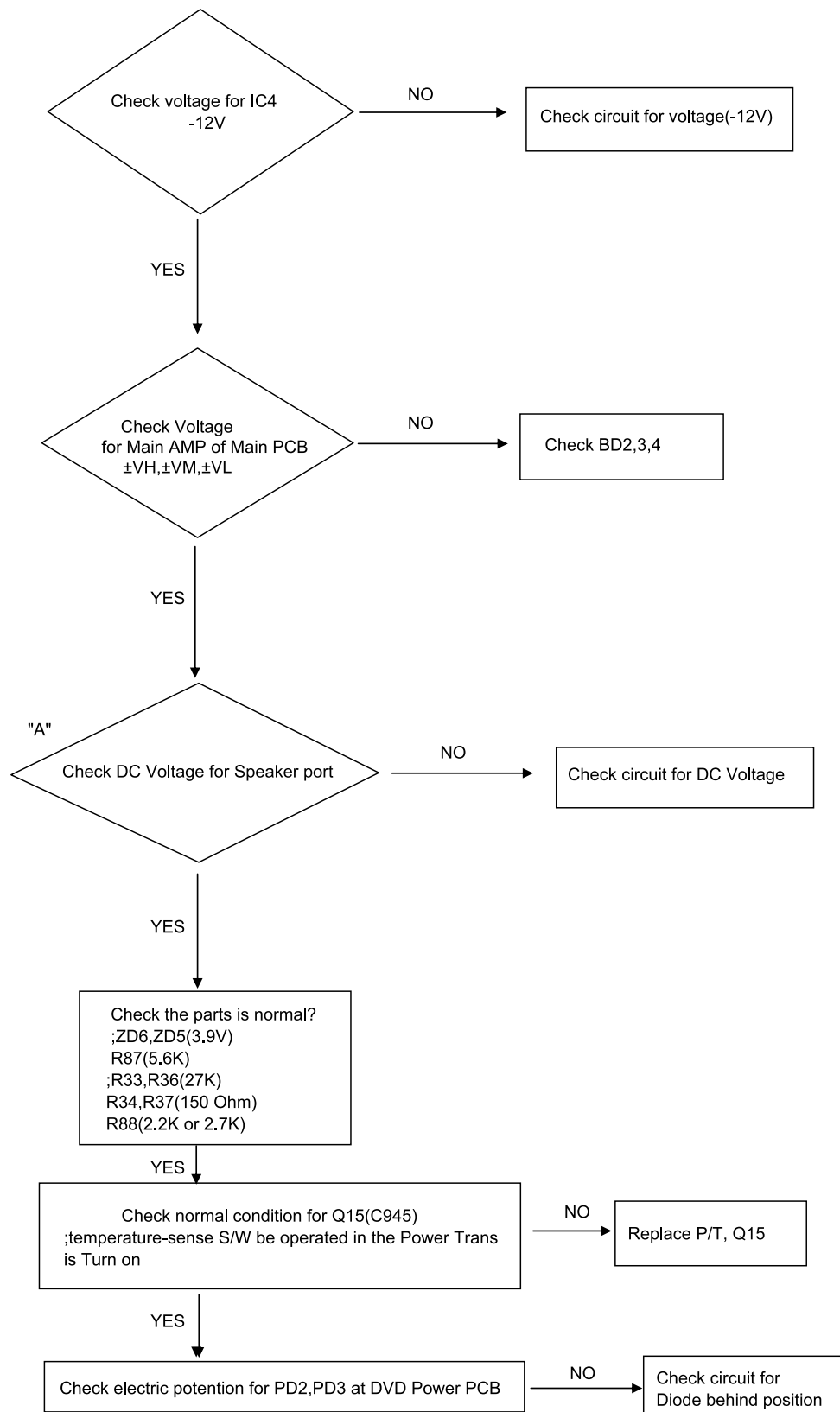


## 2. OUTPUT

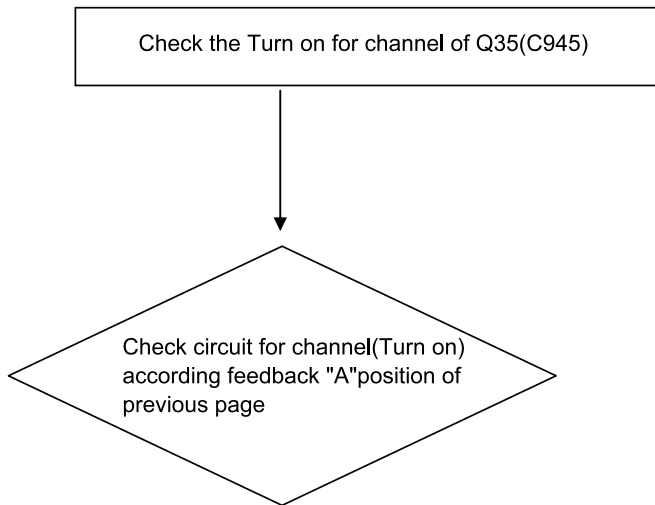


### 3. Protection(When High Voltage at Protection port)

3-1 In this case "LOW" for, Base port of Q12(R2003 TR) at MAIN PCB



3-2 In this case "LOW" for Base of Q13(A733) at Main PCB

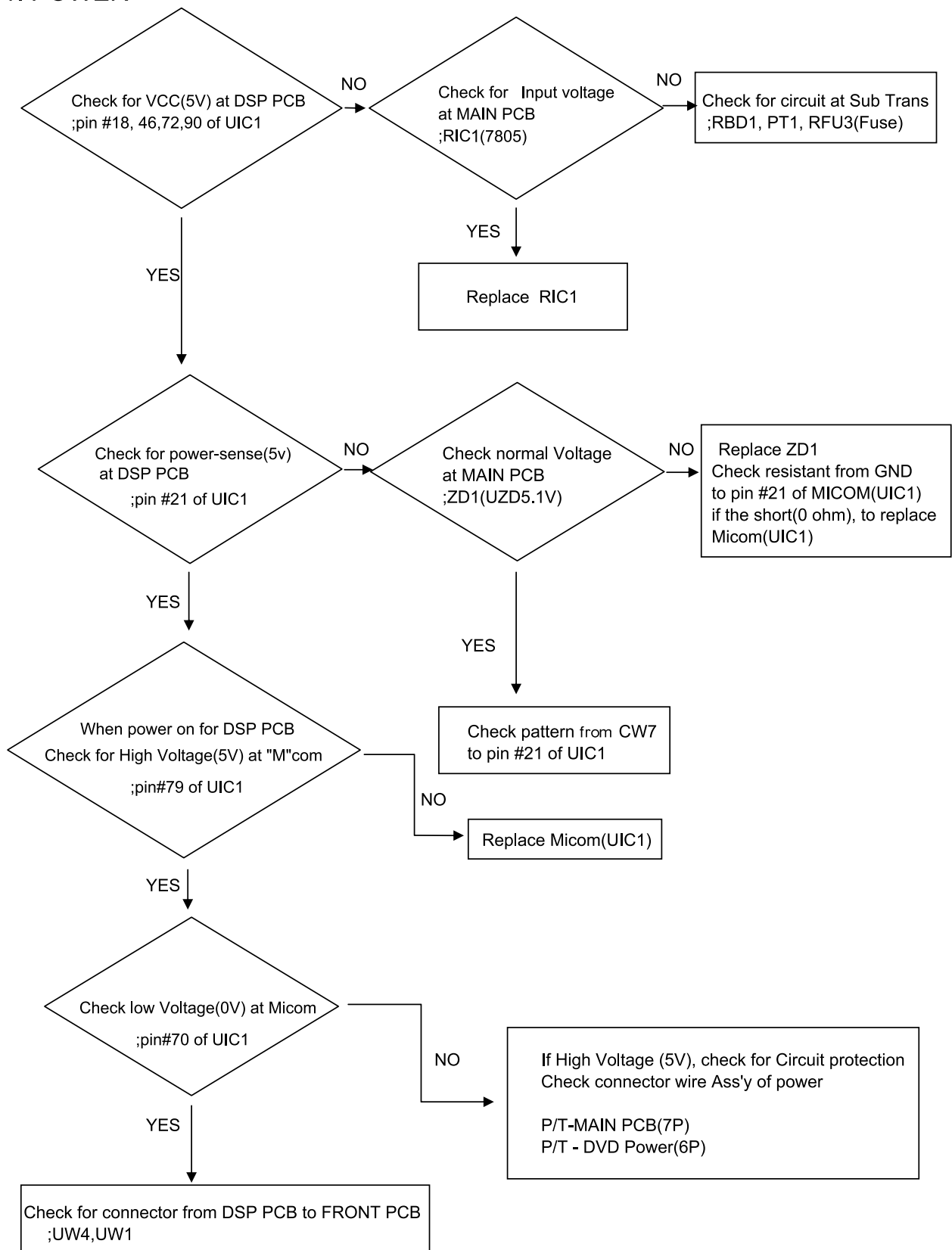


3-3 Check the Connector Wire Ass'y Connectin of each PCB

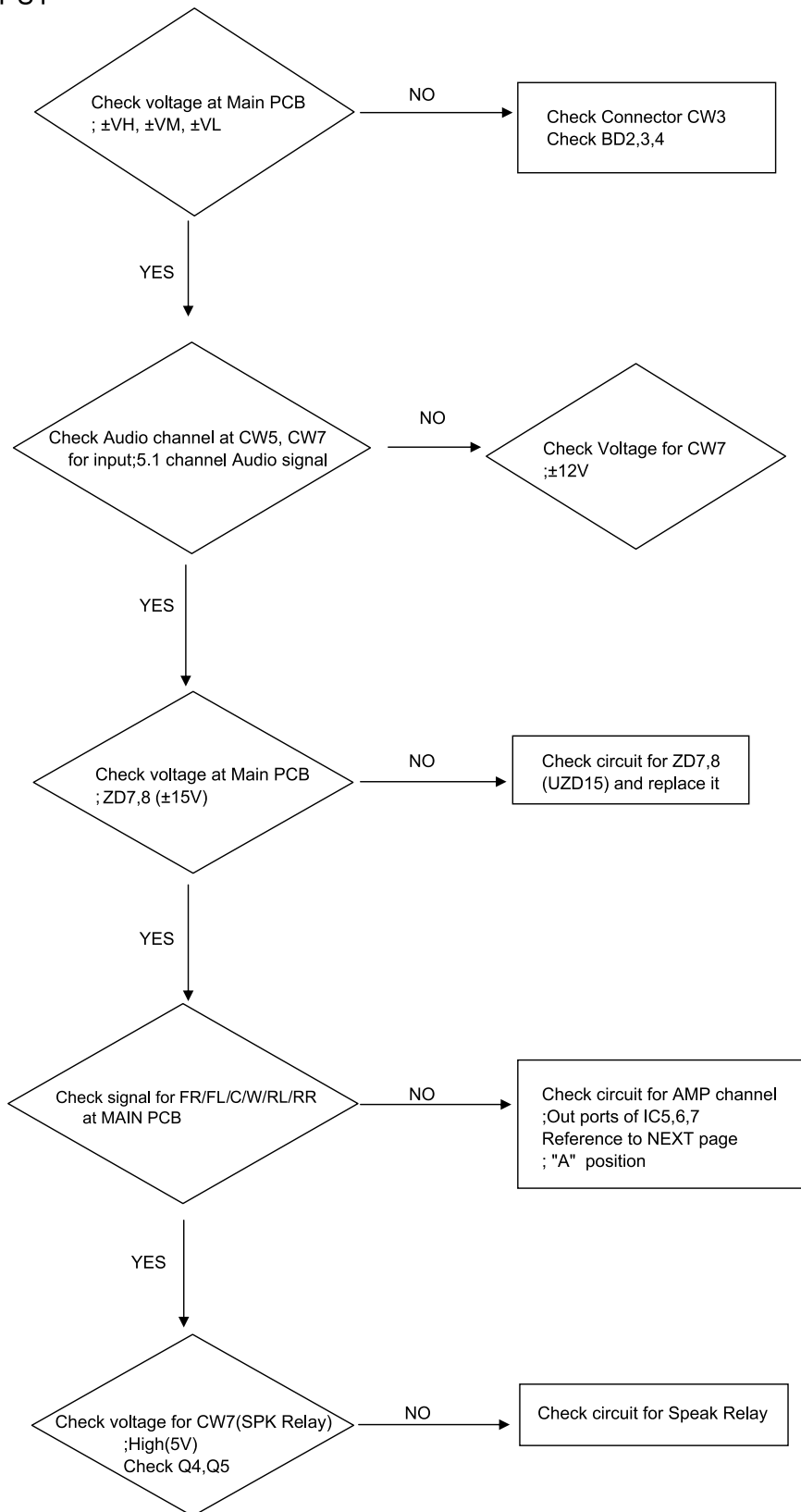
- ;DVD MECHA - Main PCB (6P,PW4)
- ;POWER TRANS - Main PCB (CW3)
- ;POWER TRANS - Main PCB (PW2)
- ;POWER TRANS - Main PCB (PW1)

## 9-1-2 Main; HT-DM550

### 1. POWER

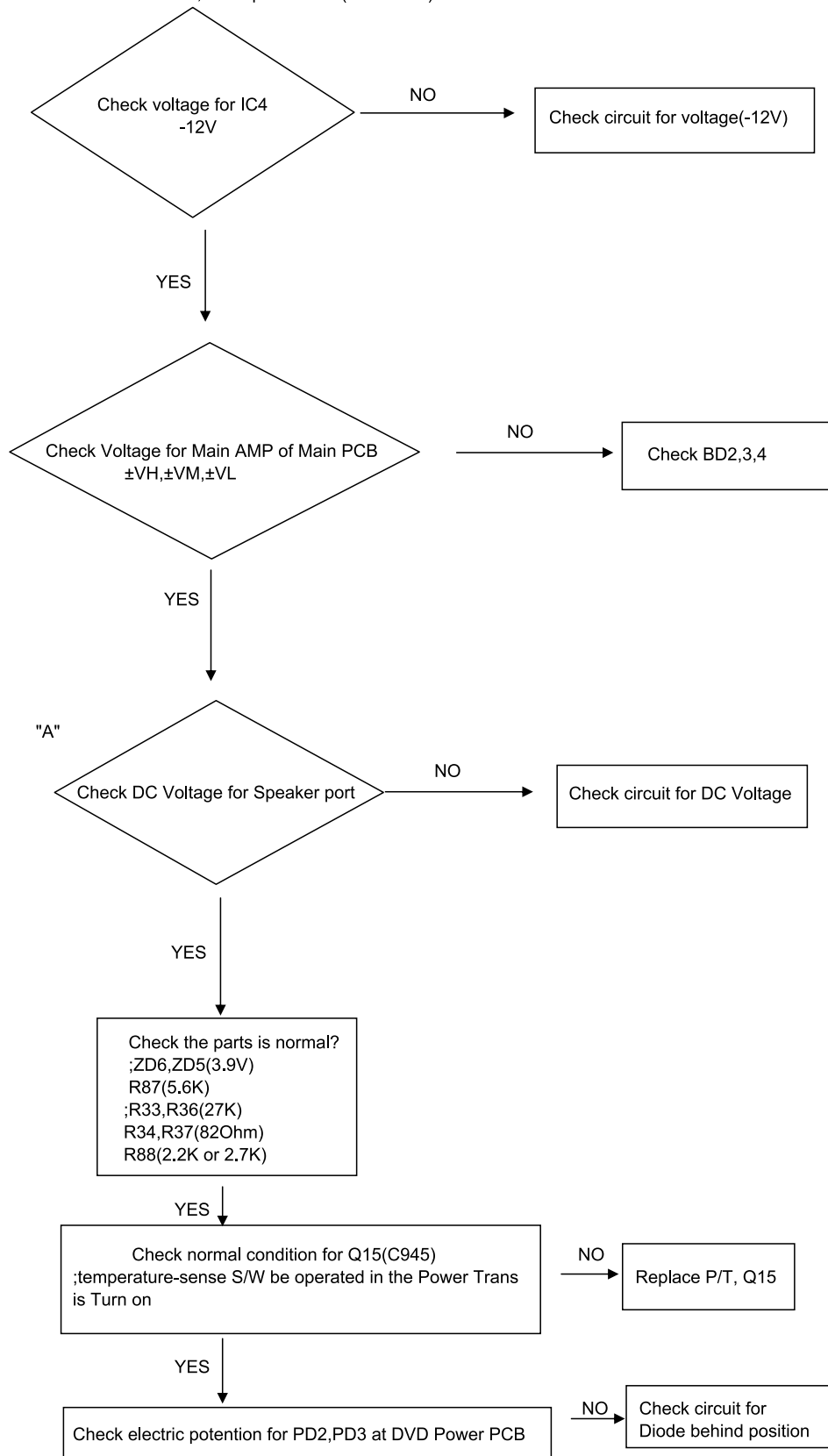


## 2. OUTPUT

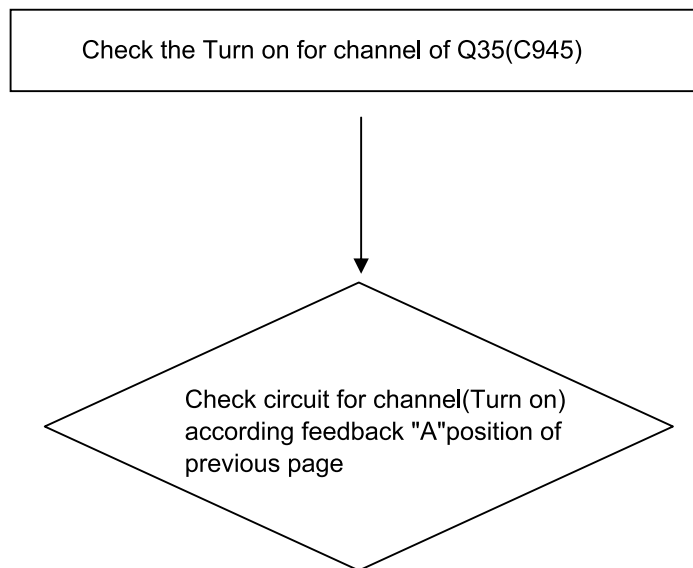


### 3. Protection(When High Voltage at Protection port)

3-1 In this case "LOW" for, Base port of Q12(R2003 TR) at MAIN PCB



3-2 In this case "LOW" for Base of Q13(A733) at Main PCB

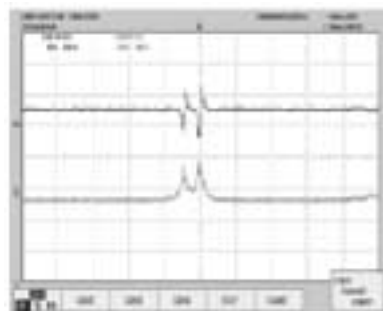
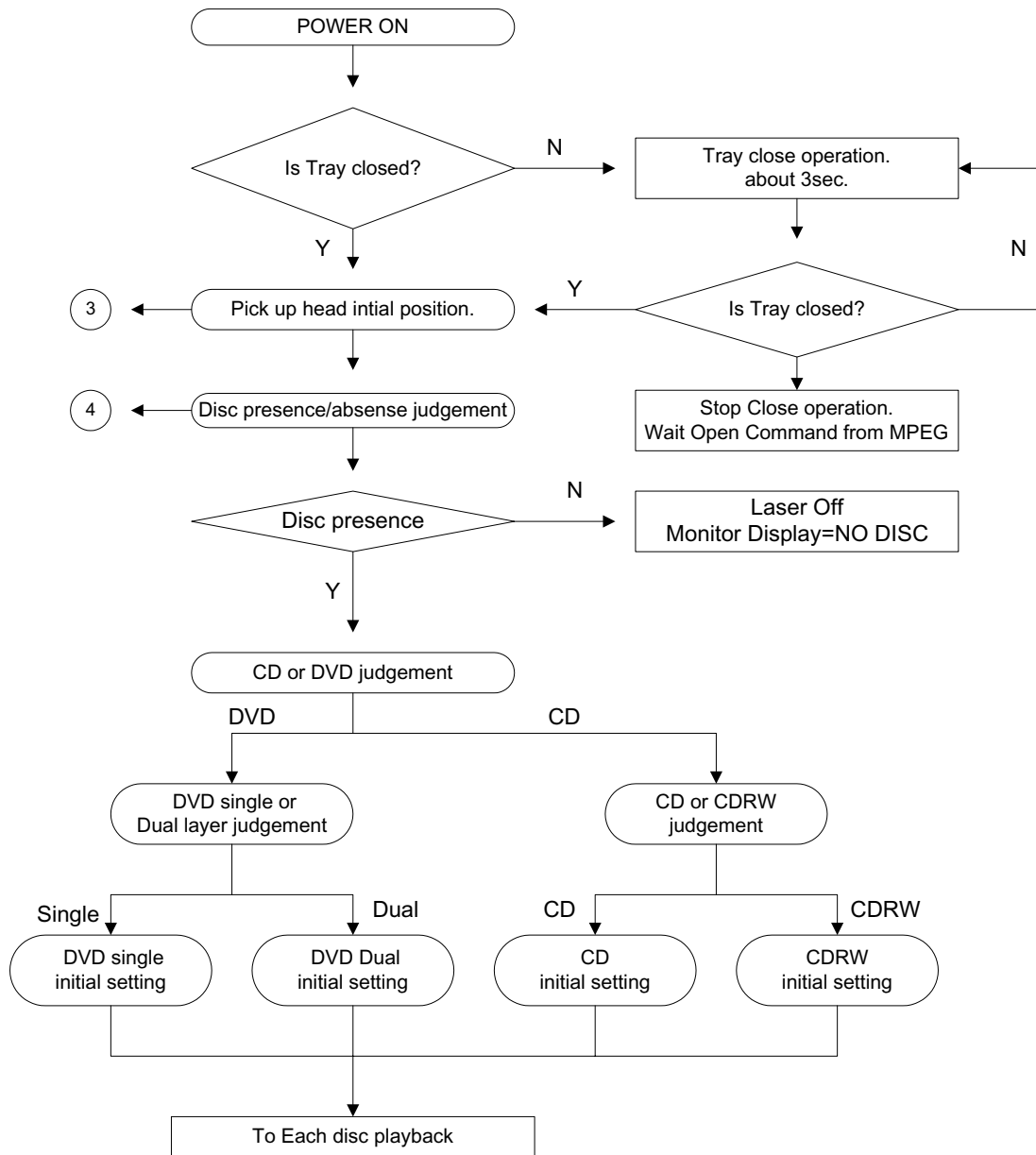


3-3 Check the Connector Wire Ass'y Connection of each PCB

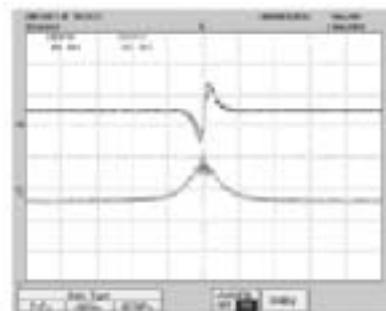
- ;DVD MECHA - Main PCB (6P, CCON2)
- ;Power Trans - Main PCB (CW3)
- ;Power Trans - Main PCB (CW2)



### 1. Initial operation after power ON

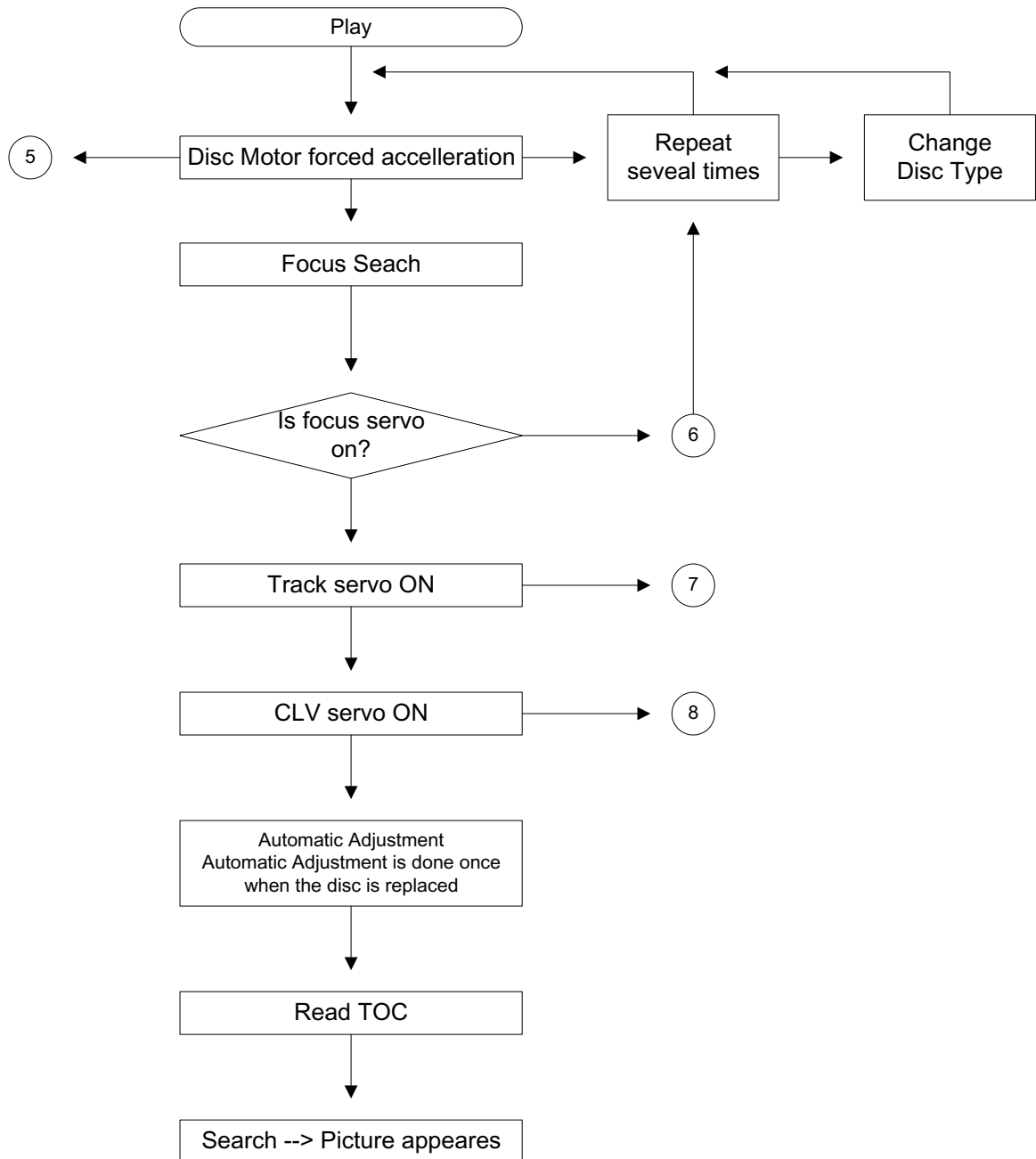


(DVD Dual)



(DVD Single)

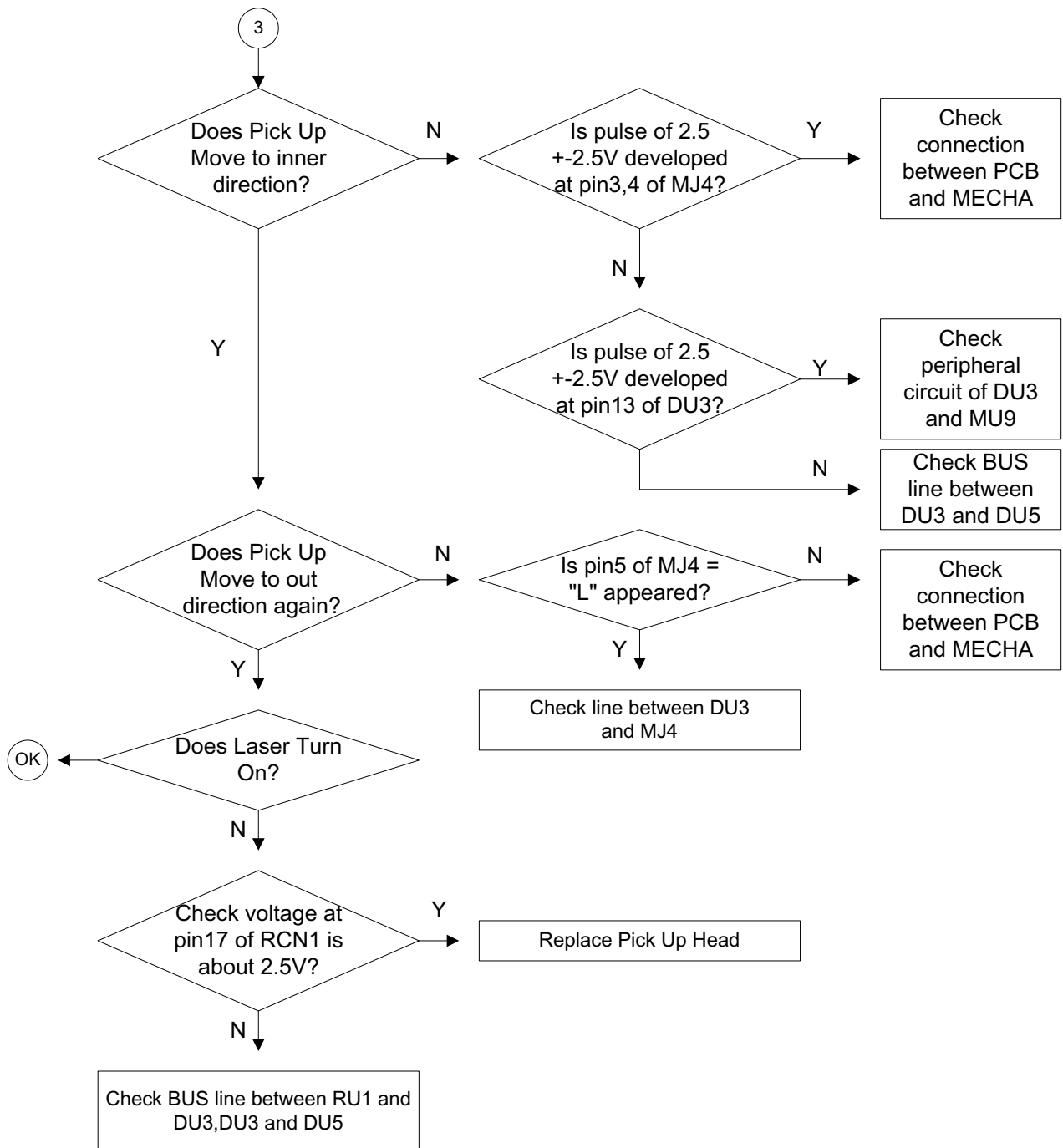
## 2. Play operation



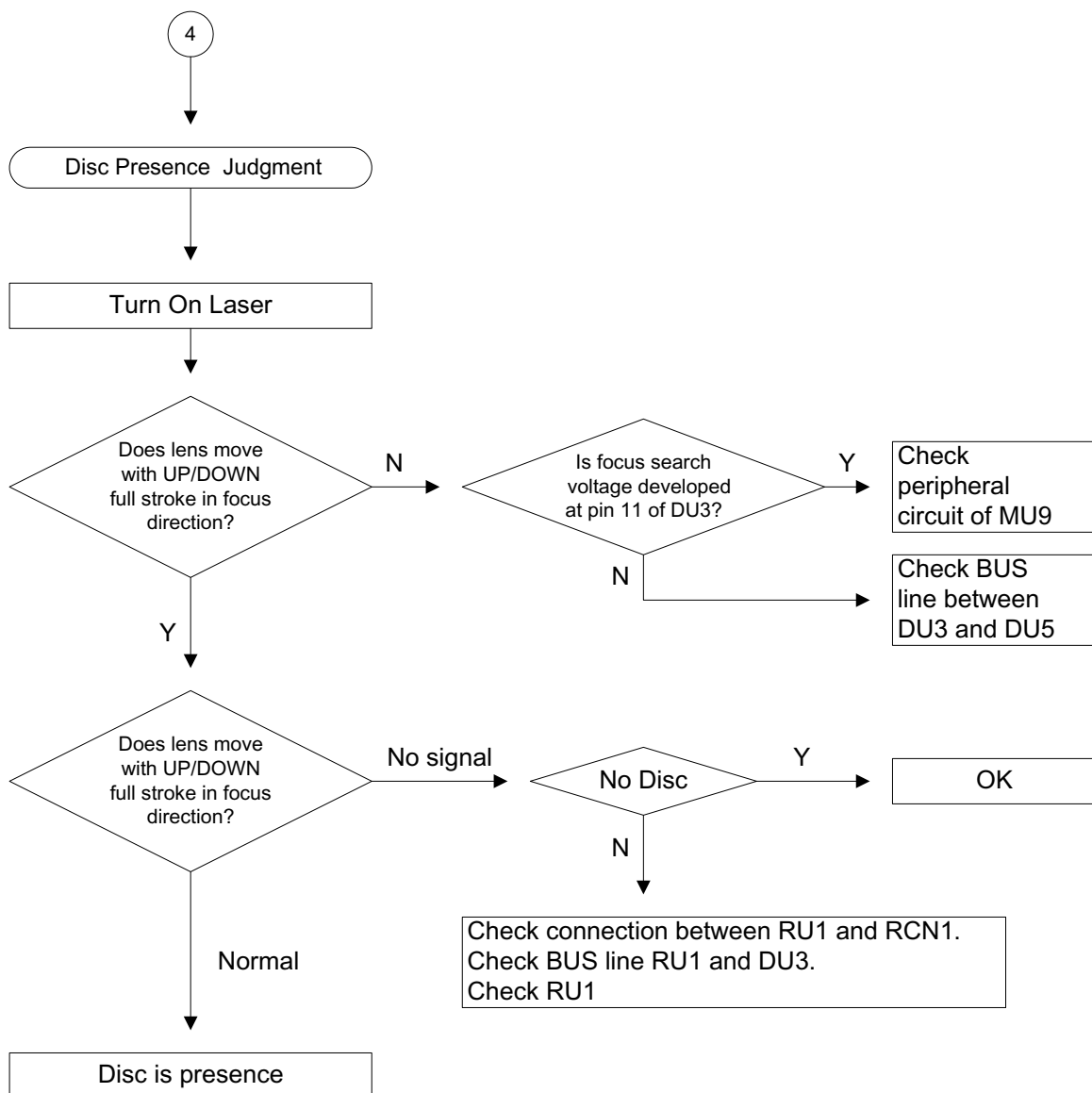
### 3. PickUp Head Initial Postion

#### PickUp Head Initial Postion

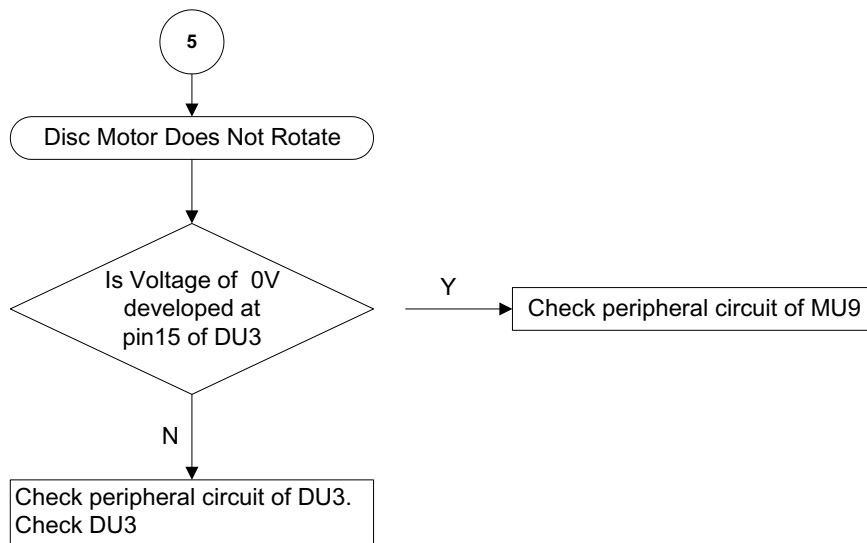
1. Move Pick Up Head to inner drection until pin5 of MJ4="L"
2. If pin5 of MJ4="L", then move Pick Up Head to outer drection for a short time.
3. Ture On the Laser of Pick Up Head to judge that disc is presence or not.



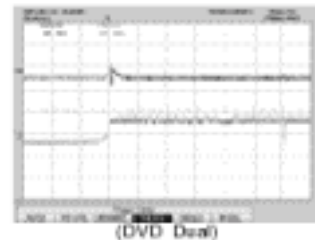
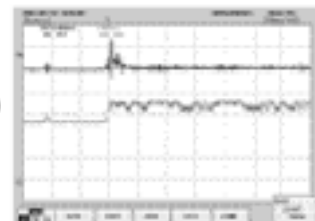
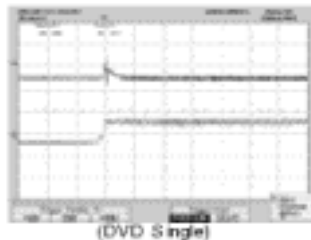
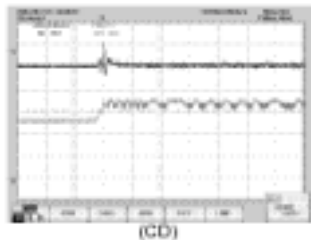
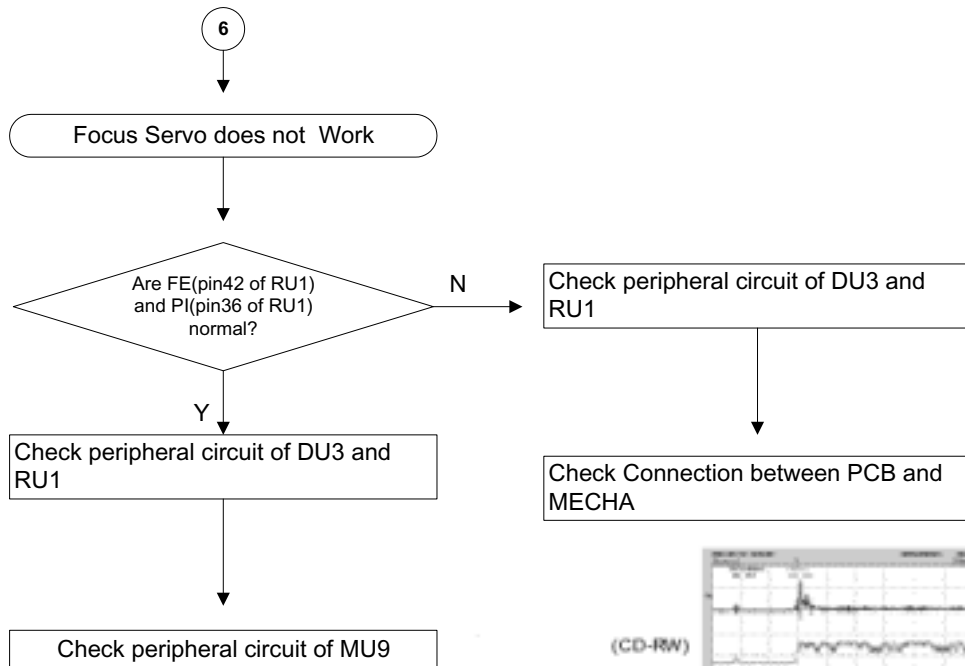
## 4. Disc Presence/Absence Judgment



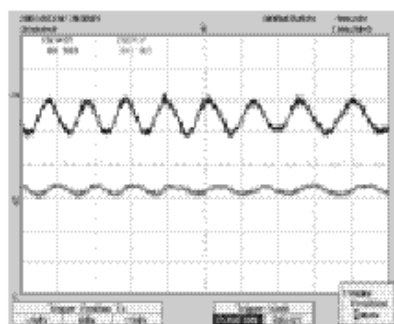
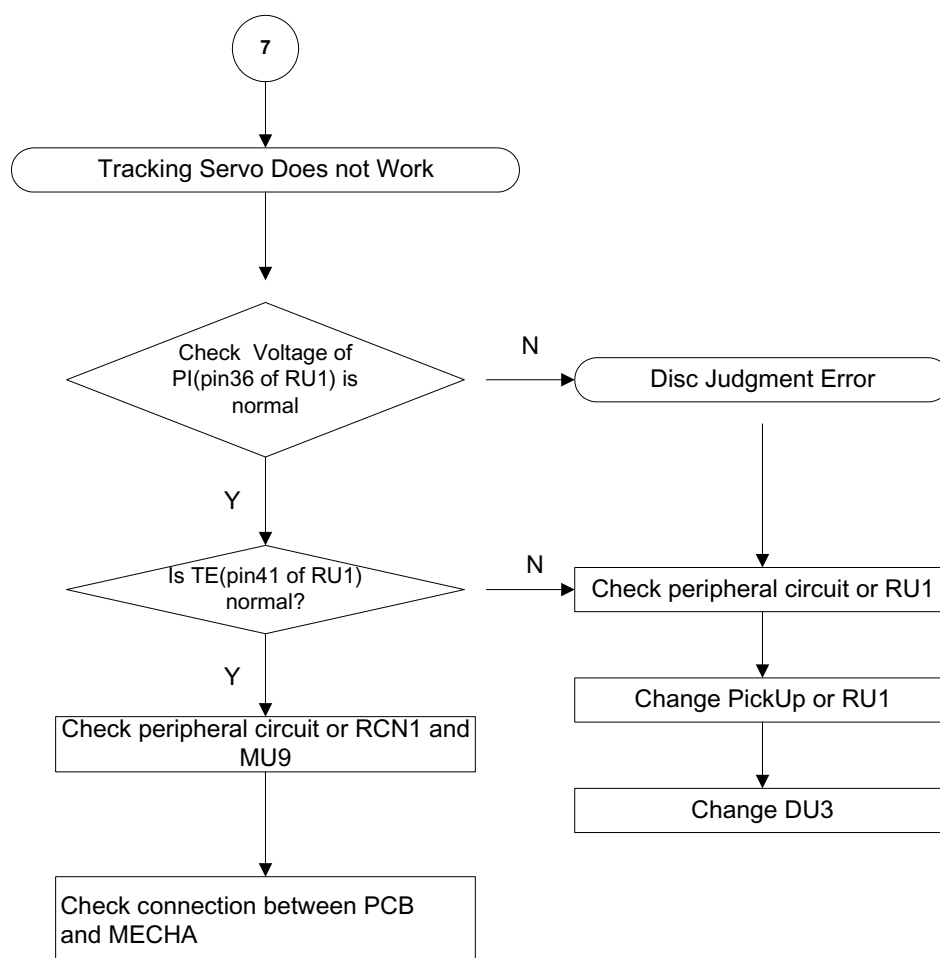
## 5. Disc Motor Does Not Rotate



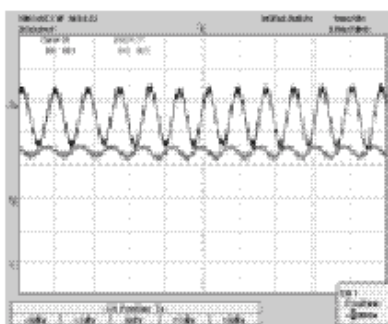
## 6. Focus Servo does not Work



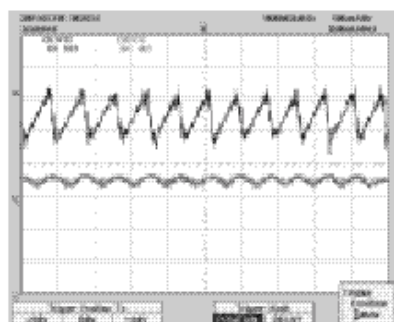
## 7. Tracking Servo Does Not Work



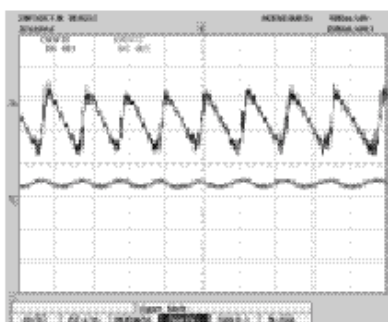
(CD)



(CD-RW)

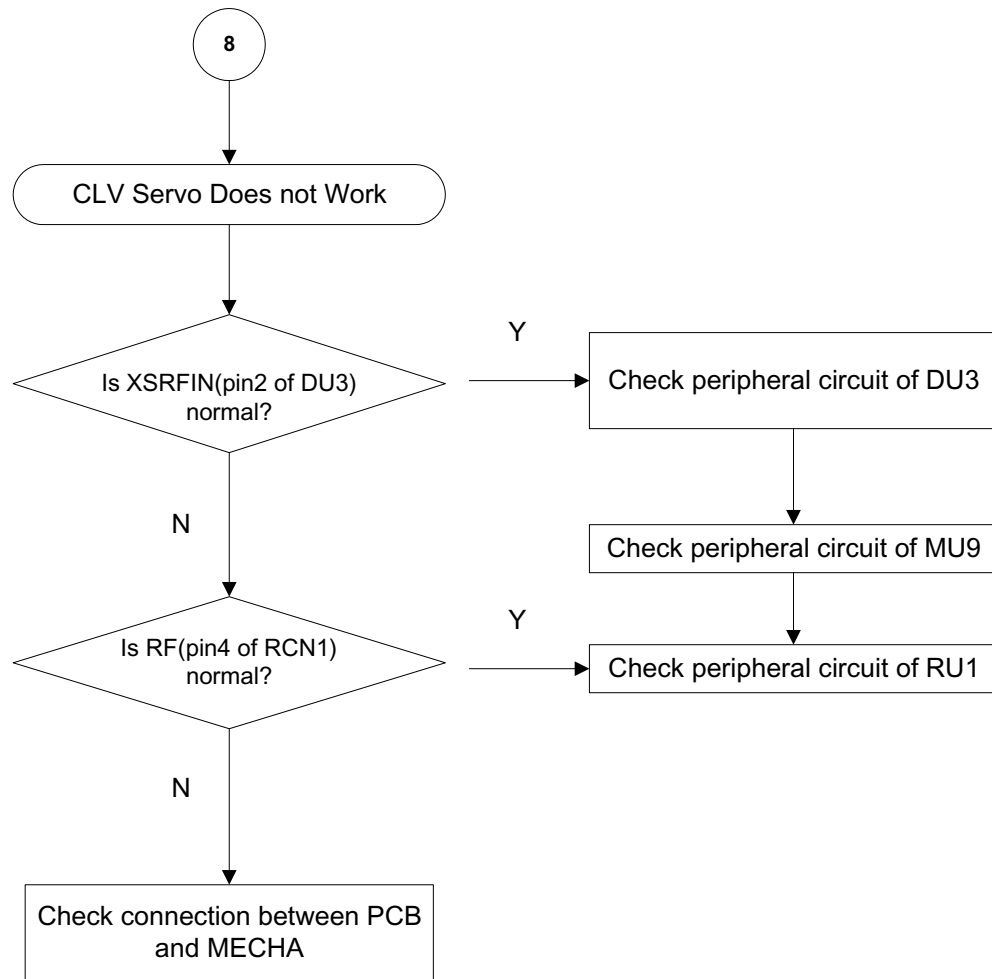


(DVD Single)



(DVD Dual)

## 8. CLV Servo Does Not Work



## 9-3 DVD Backend Parts

### 1. Initial operation after ON

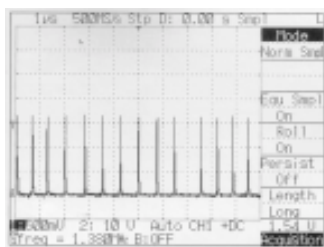
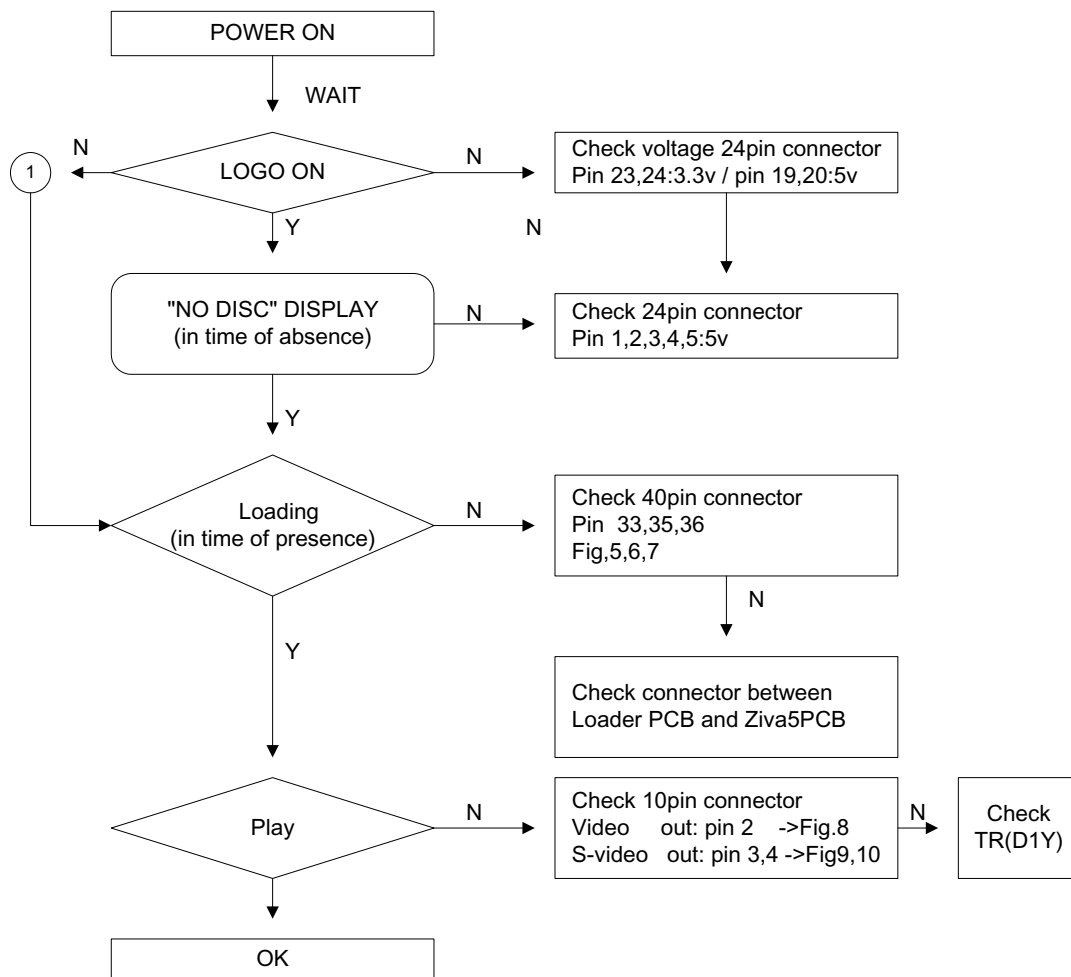


Fig.5

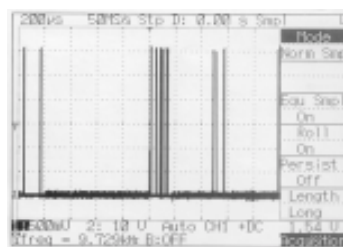


Fig.6

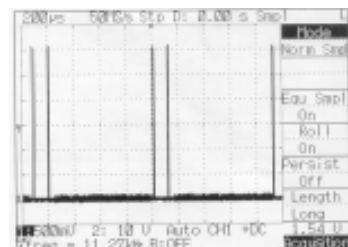


Fig.7

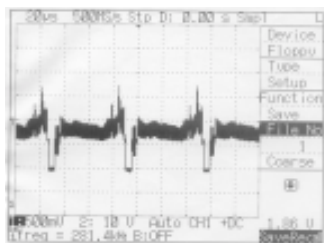


Fig.8

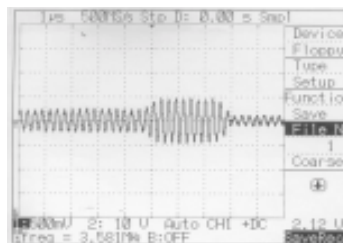


Fig.9

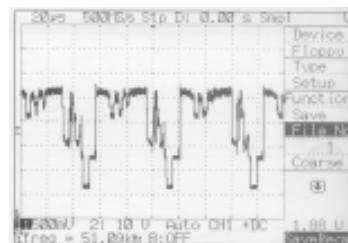


Fig.10



## 2. Logo operation

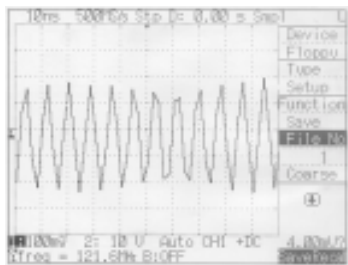
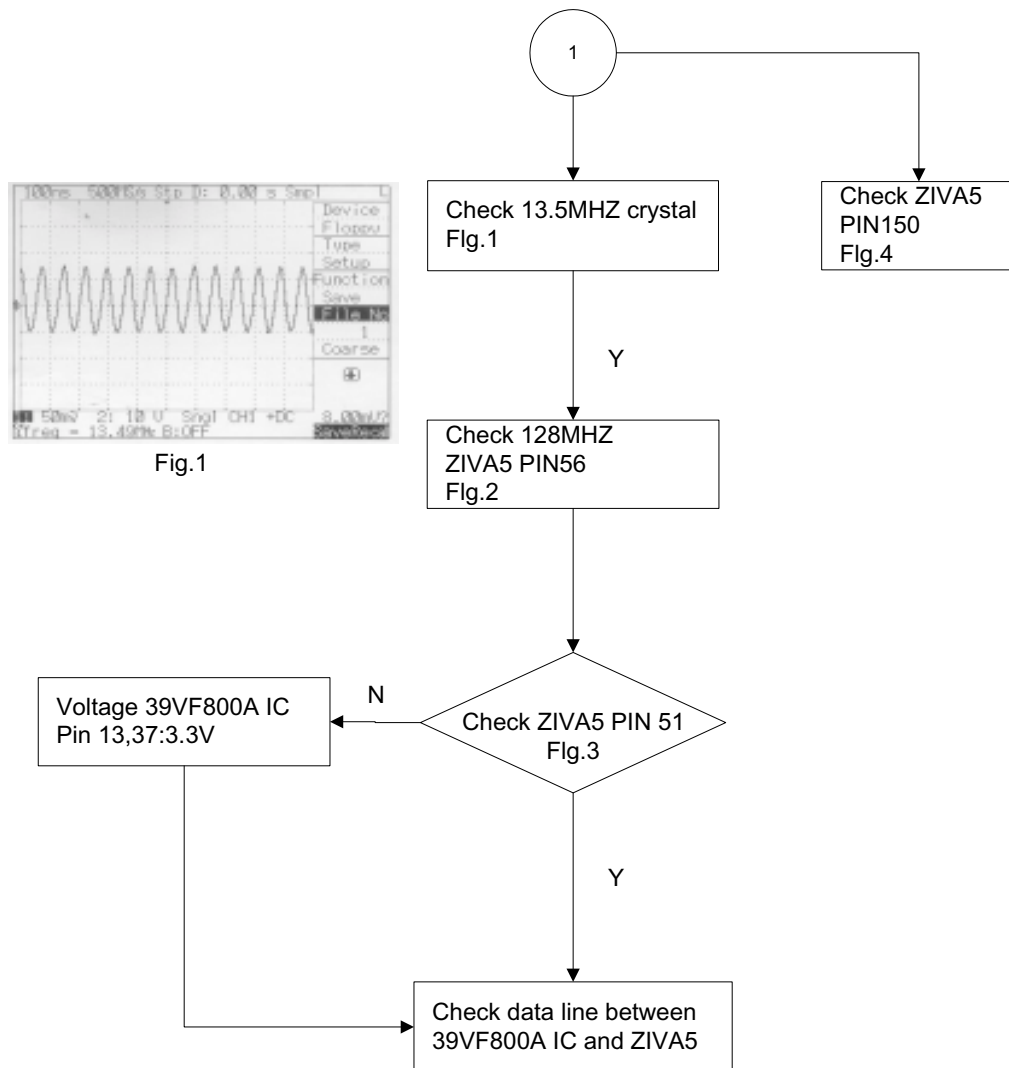


Fig.2



Fig.3



Fig.4